

ChipView-51 ROM Monitor Debugger

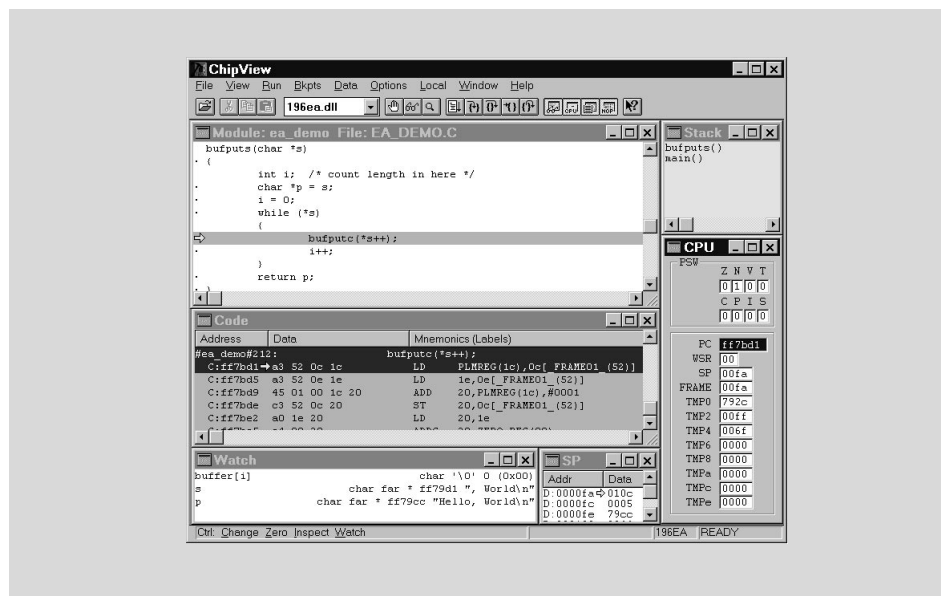
- Key-Compatible With Borland's Turbo Debugger
- High-Level Debug C, PL/M51, and Assemblers
- Royalty-Free 700 Byte Kernel Assembler Source
- Quick I/O Window For Interactive I/O
- Point & Click to Breakpoint, Watch
- Over 14 Fully Interactive Views
- ChipView-x96 Products Share Common User Interface
- DOS or Windows-Based Application

Turbo C programmers can move to debugging Intel MCS[®] 51 microcontroller embedded C instantly, as ChipView-51 is key-compatible with Borland's award-winning Turbo Debugger. The ChipView Windows Debugger is easy to learn since it makes full use of state-of-the-art Windows controls, such as toolbars, tooltips, drag-and-drop, and context-sensitive pop-up menus.

The ChipView-51 ROM Monitor Debugger connects to a target board via a serial port (on-chip or off-chip). A royalty-free 700 byte kernel is provided in assembler source. It can be embedded into every product shipped, for in-field debugging. This unique kernel requires no reserved data space, and only 8 bytes of stack space. If the serial port is also needed by the user's program, a Quick I/O window can be used for interactive I/O while the user program is running.

Views to choose from include: source-level code, assembly-level code, watches, inspectors, on-chip registers, C call stack, variables, breakpoints, execution trace, session log, elapsed cycles, memory dumps, and more.

See all variables (global & local) in the Variables Window, or track a few expressions in the Watch Window. Decompose arrays or structures across several Inspector Windows. ChipView-51 allows point and click to follow a linked list.



ChipView-51 is available with a Simulation engine, a ROM Monitor engine, or interfaced to popular Intel MCS 51 microcontroller in-circuit emulators and ROM emulators. ChipView-51 has High-Level support for C compilers and Assemblers from Archimedes, BSO/Tasking, Franklin, Keil, IAR, and Intel.

MICROCONTROLLERS SUPPORTED:

8x3x, 8xC5x, 8xC51Fx, 8xL5x, 8xL51Fx

DEVELOPMENT PLATFORMS:
Windows version Host: IBM computer or compatible 386 with at least 3 MB RAM, running Microsoft Windows (3.1 or 95).
DOS version Host: IBM computer or compatible 286, 386 with at least 3 MB RAM, running DOS 5 or later, or Microsoft Windows (3.1, 95 or NT).

AVAILABILITY:

CV51-M ChipView-51 DOS ROM Monitor Debugger - Now
CV51W-M ChipView-51 Windows ROM Monitor Debugger - Aug. '96

CONTACT:

ChipTools, Inc.
1232 Stavebank Road
Mississauga, ON L5G2V2 Canada
Phone: (905) 274-6244
FAX: (905) 891-2715
e-mail: info@chiptools.com
BBS: (905) 891-3095 (8-N-1)
WWW: <http://www.chiptools.com>
For international contacts, see Appendix B.

 **CHIPTOOLS**